

Middle Years to Careers

Partnering with Families in Middle School Career Exploration



Ohio Statewide

Family Engagement Center

at The Ohio State University

Welcome



Keli Bussell, Training and Development Specialist
Curriculum and Training Program at the
Center on Education and Training for Employment



Patrick Cunningham, Graduate Research Associate
Ohio Statewide Family Engagement Center
Counselor Education



Traci Lepicki, Associate Director of Operations and Strategic Initiatives
Center on Education and Training for Employment

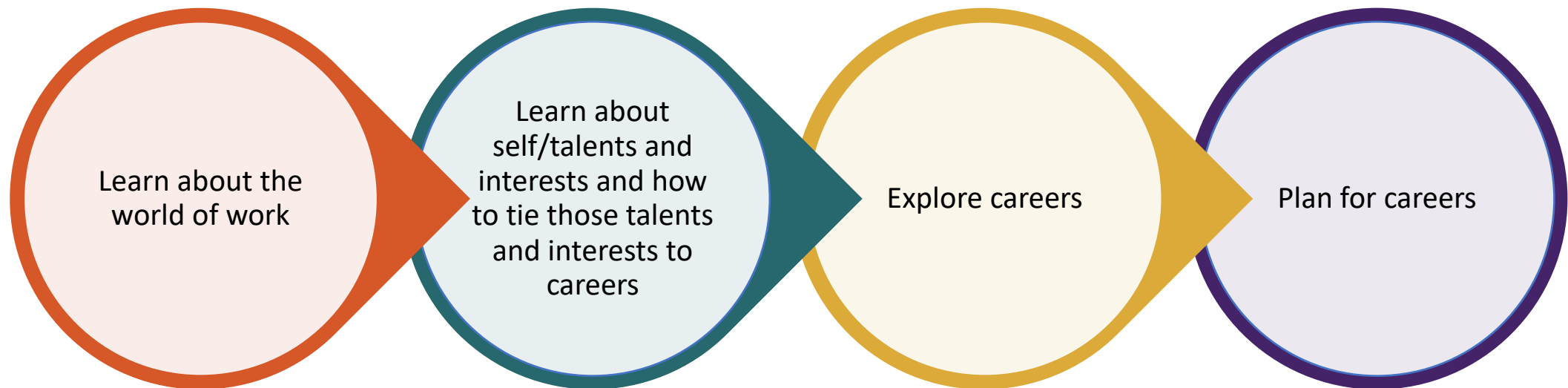
Our Goals

- ✓ **To promote effective collaboration around career exploration between middle schools and families.**
 - ✓ By describing the importance of career exploration in middle school.
 - ✓ By describing the importance of family engagement in career exploration.
 - ✓ By discussing the roles of families, in partnership with schools, for career exploration in middle school.
 - ✓ By applying effective family engagement strategies to real situations.



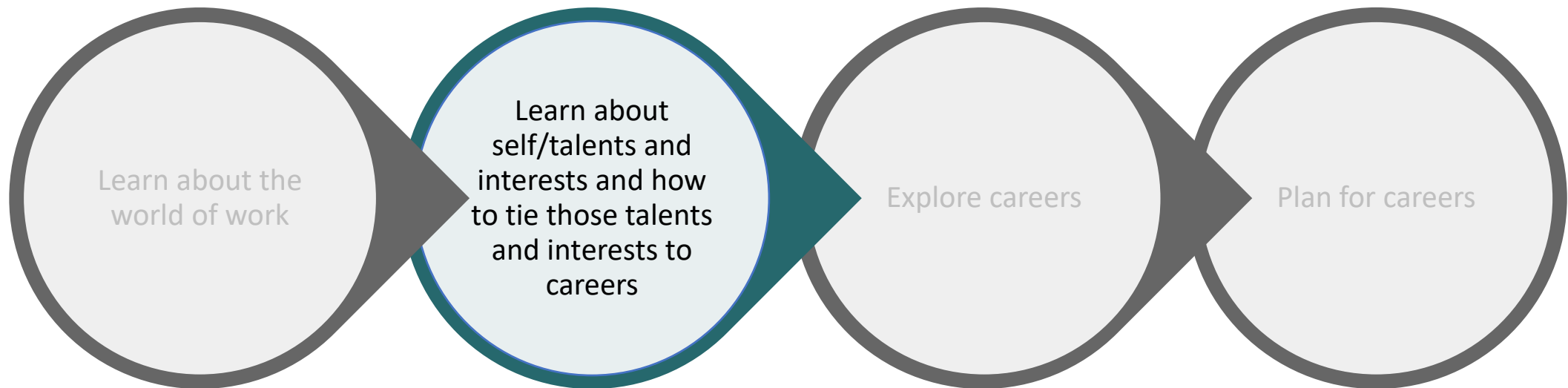
Career Exploration in Middle School

Developmental process



Career Exploration in Middle School

Middle school is a crucial time for career interventions and career-related activities and can have a significant and positive impact. ^{1, 7, 13}

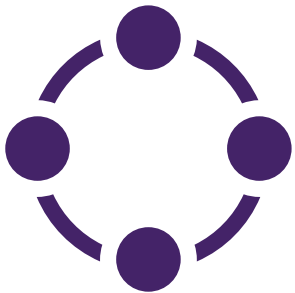


Career Exploration in Middle School



Self-efficacy: our perception of our own capabilities in reaching a given level of attainment, or of our ability to reach goals ³

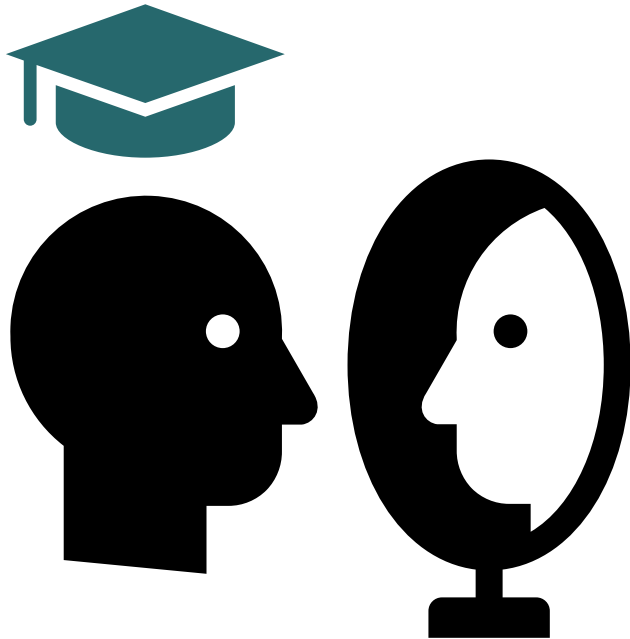
Self-concept: how we perceive ourselves, which changes over time throughout stages of life ¹²



Increase exposure: expand outside networks and immediate circles.



Career Exploration in Middle School



Increased understanding of self and tying to career interests



Increased ability to make informed decisions about academic planning



Family Influence on Career Development

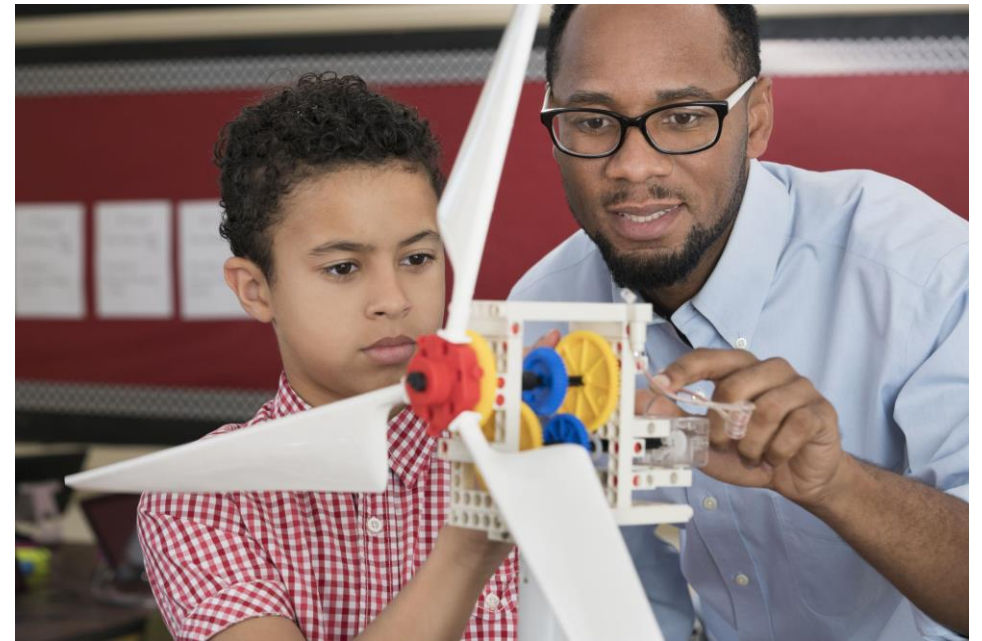


- Families are the primary career influence for children ^{2, 9}
- Families have expectations and beliefs that shape their child's development
 - Expectations influence conversations and behavior
 - Send messages directly and indirectly to the child
 - Lead to formation of career interests and beliefs about self and careers



Family Engagement in Career Exploration

- Engagement in child's career development both at home and in school is influenced by:
 - Motivational beliefs
 - Perceptions of invitations for involvement from others
 - Life context ⁸
- Partnerships between schools, families, and communities around career exploration are undervalued and underemphasized.



What can schools do?

Reminder:

Perkins V is approved for 5th grade and up!

Video Library



9. CTE in the Middle Grades

8:22



What can schools do?

Reminder:

[Title 1 funding](#) can be applied to family engagement in this area.

Parent Engagement



PROGRAM CONTACTS

Hearcel Craig

Parent Engagement Coordinator
(614) 387-2215
Hearcel.Craig@education.ohio.gov

Dr. Diane Neal

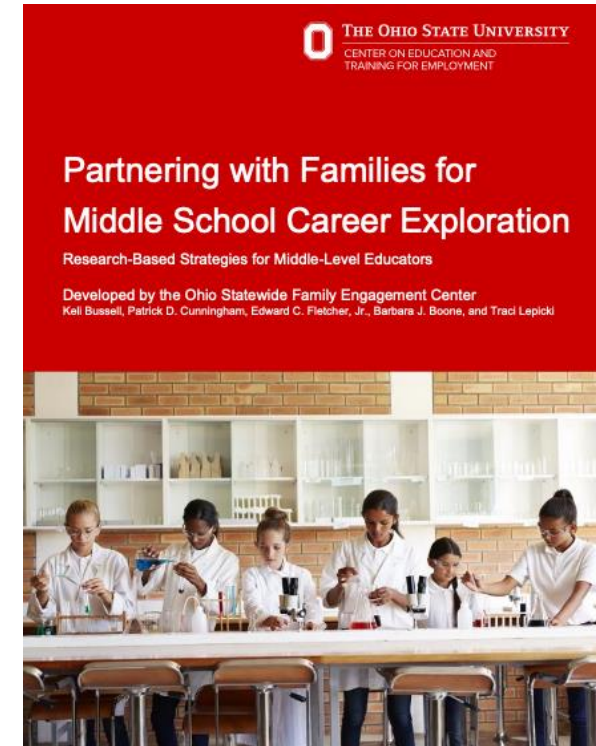
Assistant Director
(614) 728-3483
Diane.Neal@education.ohio.gov

As per the Elementary and Secondary Education Act, Title I, Part A Section 1118, a written parental involvement policy shall be developed jointly with, agreed upon with, and distributed to parents of participating children.



Research Brief

- “Partnering with Families for Middle School Career Exploration”
- Applies Joyce Epstein’s framework for family engagement to the research on middle school career exploration to describe opportunities for partnerships between schools and families in this area



Strategy #1: Value families' role in career development



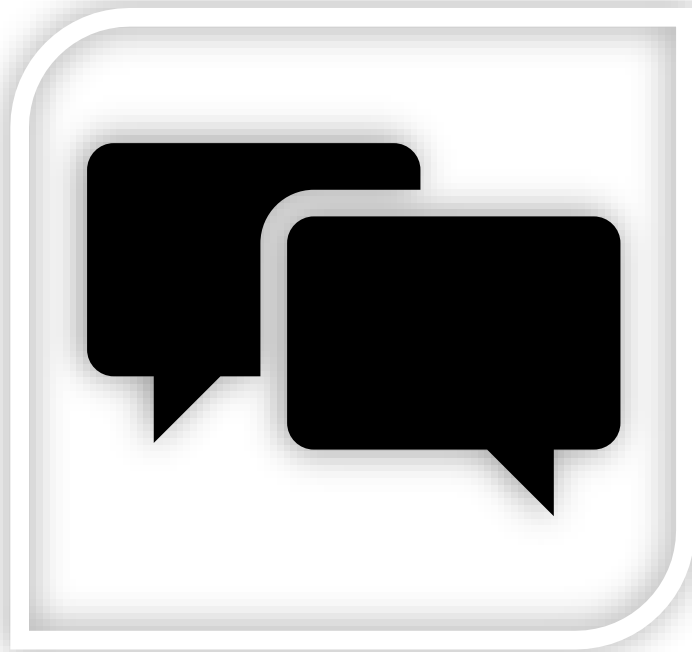
OPPORTUNITIES SCHOOLS CAN USE:

- Support families' understanding of the important role they play.
- Provide families with discussion topics to have at home.
- Encourage families to support students' career exploration at home.
- Help expose families to careers with tools and resources.



Strategy #2:

View families as collaborative communicators



OPPORTUNITIES SCHOOLS CAN USE:

- Ask families for their feedback regarding career-related communication and practices from the school.
- Share information about software and surveys used and other related resources and how they can be involved.
- Highlight and share with families who the career contact is at the school.
- Create toolkits and resources for families to make information readily accessible.



Strategy #3: Build partnerships with families through volunteering



OPPORTUNITIES SCHOOL PERSONNEL CAN USE:

- Survey families to find out how they would like to be involved in career-related activities with the school.
- Request families provide job shadowing opportunities.
- Invite families to teach employability skills and/or technical skills within their areas of expertise.
- Solicit families to be career mentors to students.
- Invite families to virtual and in-person events to learn more about the courses available to their student and how courses help prepare them for future careers.



Strategy #4: Encourage families' career-related learning at home

OPPORTUNITIES SCHOOL PERSONNEL CAN USE:

- Express the importance of family engagement in the career exploration process.
- Share with families about career-related activities that are taking place in school and provide information on follow-up activities or conversations to have at home.
- Send home guides for how to help students interpret career- and self-assessments.
- Refer families to your respective state's website for additional resources.



Strategy #5:

Collaborate with families as decision makers for career-related planning and curriculum



OPPORTUNITIES SCHOOL PERSONNEL CAN USE:

- Recruit families to participate in the planning of career-related programming inside and outside of school.
- Establish a standing schedule for meeting with families on career-related topics.
- Solicit feedback from families regarding the effectiveness of current career exploration practices.
- Ensure meetings for course selection are conducted in a way that families can access.



Strategy #6: Collaborate with the community



OPPORTUNITIES SCHOOL PERSONNEL CAN USE:

- Invite businesses to make school visits, to offer job shadowing experiences or summer skill camps.
- Invite area career and technical educators to connect with students through field trips so that students can see onsite labs, learn about organizations hiring from their programs and learn of potential pre-apprenticeships or internships and how to prepare for them.
- Connect families with other families and with after school programs that offer career-related experiences.



Partnering with Families for Middle School Career Exploration

Research-Based Strategies for Middle-Level Educators

Developed by the Ohio Statewide Family Engagement Center
Keli Bussell, Patrick D. Cunningham, Edward C. Fletcher, Jr., Barbara J. Boone, and Traci Lepicki



Middle Years to Careers

<https://ohiofamiliesengage.osu.edu/middle-years-to-careers/>

<https://ohiofamiliesengage.osu.edu/newsletters/>



Contact Us



Keli Bussell, Training and Development Specialist
Curriculum and Training Program at the
Center on Education and Training for Employment
Bussell.18@osu.edu



Patrick Cunningham, Graduate Research Associate
Ohio Statewide Family Engagement Center
Counselor Education
Cuninngham.1062@buckeyemail.osu.edu



Traci Lepicki, Associate Director of Operations and Strategic Initiatives
Center on Education and Training for Employment
Lepicki.1@osu.edu

References

1. Akos, P., Konold, T., & Niles, S.G. (2004). A career readiness typology and typical membership in middle school. *The Career Development Quarterly*, 53(1), pp. 53-66. <https://doi.org/10.1002/j.2161-0045.2004.tb00655.x>
2. American Student Assistant (2019). Understanding middle school and high school students' attitudes toward future planning. White Paper.
3. Bandura, A. (1977). Self-efficacy: toward a unifying theory of behavioral change. *Psychological Review*, 84(2), 191-215.
4. Dunning, D., Heath, C., & Suls, J. (2004). Flawed Self-Assessment Implications for Health, Education, and the Workplace. *Psychological Science in the Public Interest*, 5, 69-106. <https://doi.org/10.1111/j.1529-1006.2004.00018>
5. Ehrlinger, J., Johnson, K., Banner, M., Dunning, D., & Kruger, J. (2008). Why the unskilled are unaware: Further explorations of (absent) self-insight among the incompetent. *Organizational Behavior and Human Decision Processes*, 105(1), 98-121. <https://doi.org/10.1016/j.obhdp.2007.05.002>
6. Feller, R.W. & Leard, J. (2017-2018). YouScience aptitude assessment moves career science beyond self-report interests. *Career Development Network Journal*, 33(4), 22-32
7. Hartung, P. J., Porfeli, E. J., & Vondracek, F. W. (2005). Child vocational development: A review and reconsideration. *Journal of Vocational Behavior*, 66, pp 385–419. <https://doi.org/10.1016/j.jvb.2004.05.006>
8. Hoover-Dempsey, K., Walker, J., & Sandler, H. (2005). 'Parents' motivation for involvement in their children's education' in E. Patrikakou, R. Weissberg, S. Redding, & H. Walberg (Eds.), *School-family partnerships for children's success* (pp.40-56). New York, NY: Teachers College Press.
9. Keller, B. K., & Whiston, S. C. (2008). The role of parental influences on young adolescents' career development. *Journal of Career Assessment*, 16(2), 198-217. <https://doi.org/10.1177/1069072707313206>
10. Metz, A.J. & Jones, J.E., (2013). 'Ability and Aptitude Assessment in Career Counseling' in Brown, S. & Lent, B. (Ed.). *Career Development and Counseling: Putting Theory and Research to Work* (2nd Edition, Chapter 16, pp 449-476). Hoboken, New Jersey: John Wiley & Sons.
11. Stone, J., & Lewis, M. (2012). *College and career ready in the 21st century: Making high school matter*. New York, NY: Teachers College Press.
12. Super, D.E. (1957). *The psychology of careers*. New York: Harper & Row.
13. Whiston, S. C., J. Rossier, Hernandez Barón, J.P.M. (2017). 'Evidence-Based Practice in Career and Workforce Development Interventions', in Solberg, V.S.H. & Ali, S.R. (ed.). *Handbook of Career and Workforce Development, Research, Practice, and Policy*. London: Routledge, pp 39-56. <https://doi.org/10.4324/9781315714769>

