



WINGER *Flight Paths*

**An E-12 Initiative Focused on
All Students Making a More Informed
Choice after Graduation**

Topics

1. Guiding Philosophies
2. “See it to be it”
3. Career Guidance Circle Activity
4. Secondary Flight Paths 4-3-2-1
5. Former Student Presentation
6. Final Thoughts

Guiding Philosophy

Being “Future Minded”

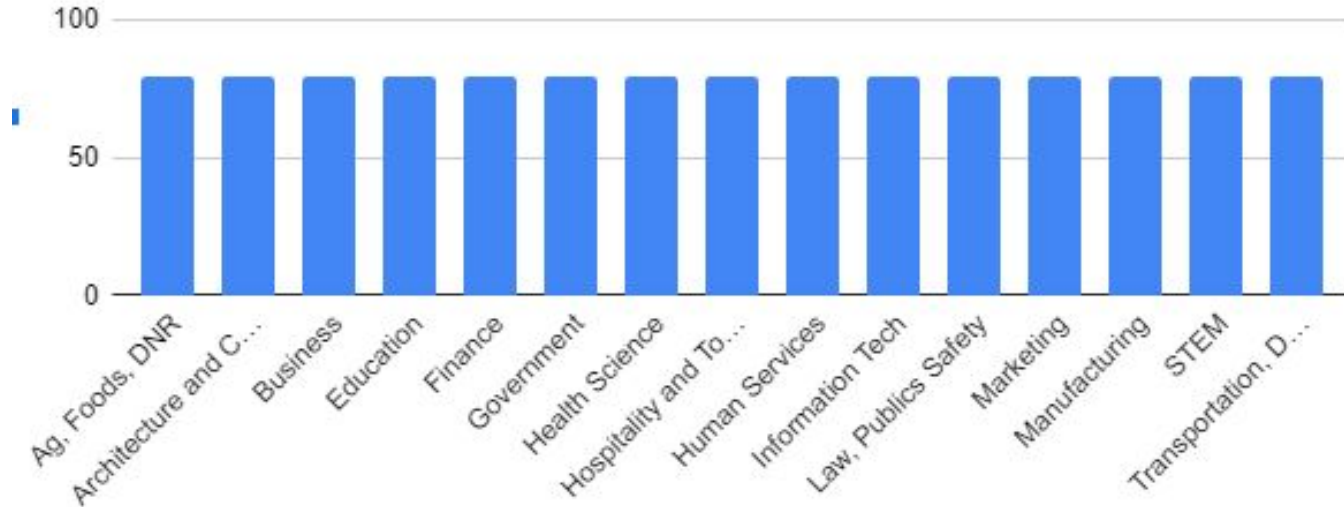


Guiding Philosophy

Lens of equality among career fields and continuing levels of education

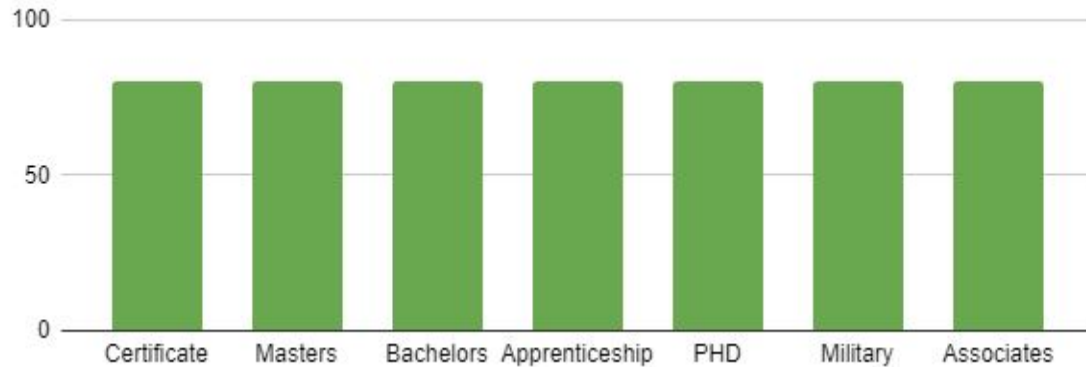
Guiding Philosophy

Lens of equality among career fields and continuing levels of education



Guiding Philosophy

Lens of equality among career fields and continuing levels of education



Guiding Philosophies

SLEDS Data: 2016

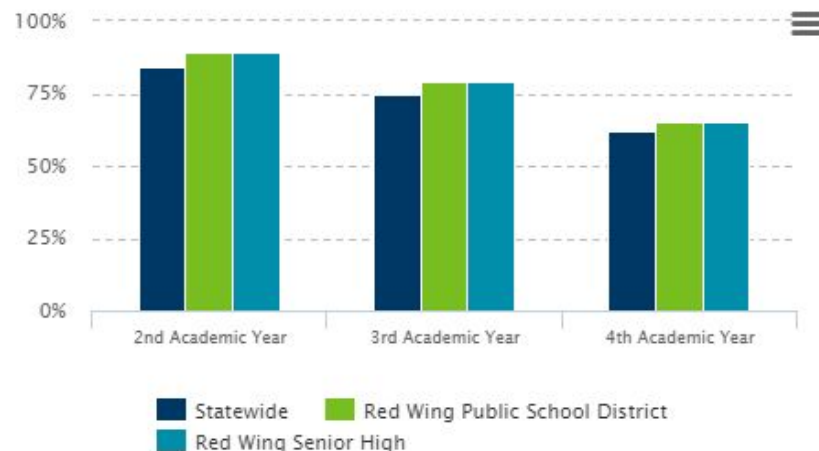
Organization	Number of HS Graduates
Statewide	57,993
Red Wing Public School District	159

Guiding Philosophies

SLEDS Data: 2016

Organization	Number of HS Graduates
Statewide	57,993
Red Wing Public School District	159

Percent of HS Graduates Starting College and Persisting or
Graduating as of:

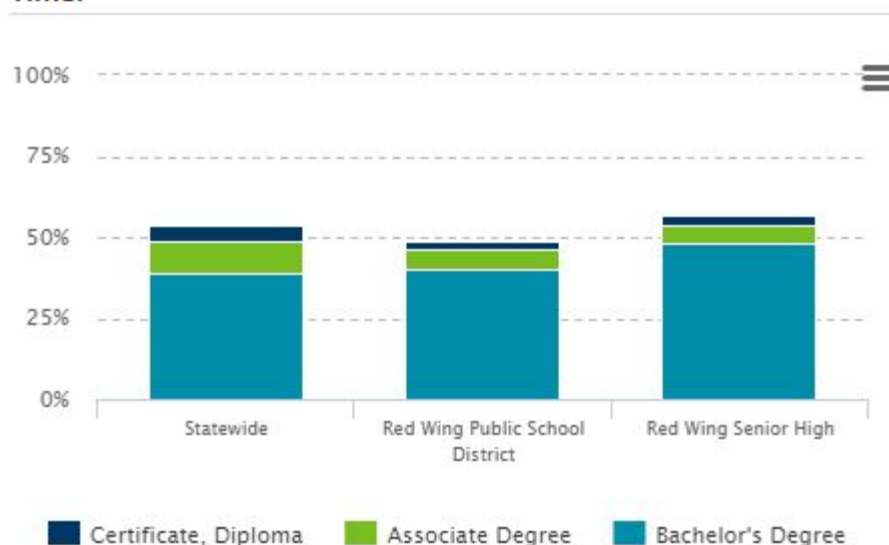


Type	Statewide	Red Wing Public School District	Red Wing Senior High
2nd Academic Year	37,084 (84%)	109 (89%)	109 (89%)
3rd Academic Year	32,932 (75%)	97 (79%)	97 (79%)
4th Academic Year	27,160 (62%)	80 (65%)	80 (65%)
Students Enrolled Year 1	44,104	123	123

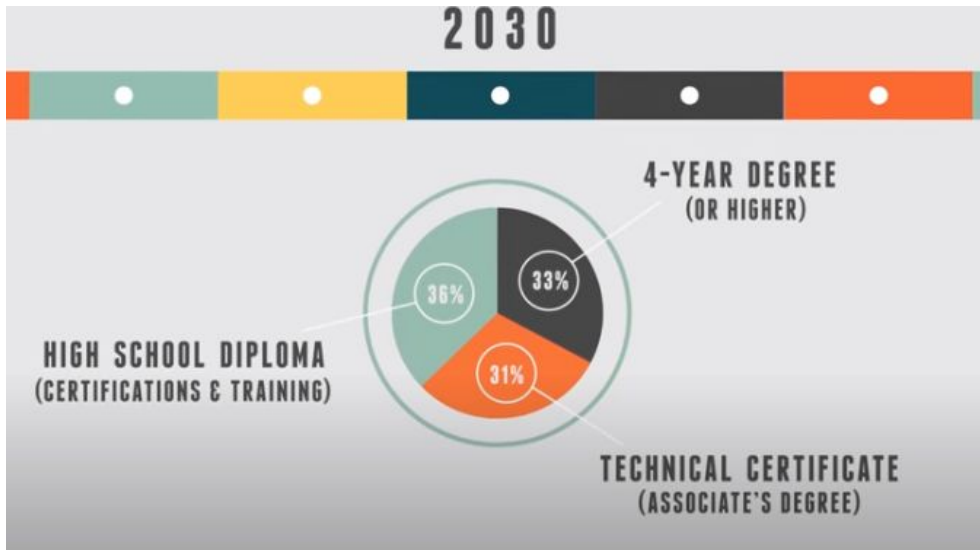
Guiding Philosophies

SLEDs data 2013

Percent of HS Graduates Completing A Degree or Certificate at Any Time:



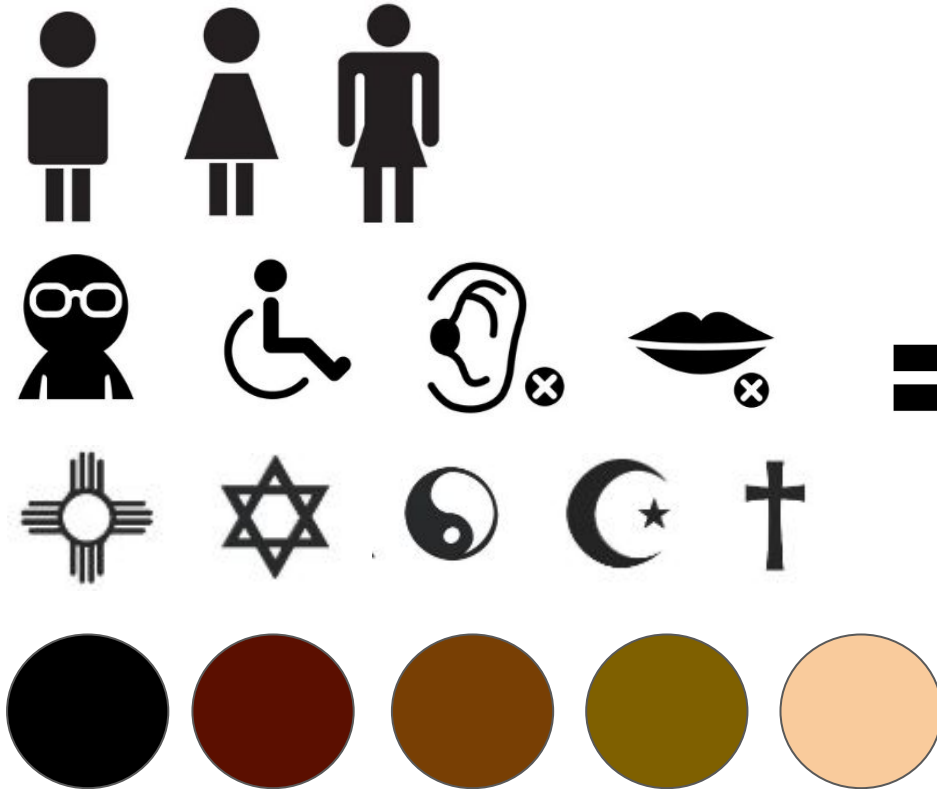
Undergraduate Award	Red Wing		
	Statewide	Public School District	Senior High
Certificate, Diploma	2,999 (5%)	7 (3%)	4 (3%)
Associate Degree	5,582 (10%)	12 (6%)	10 (6%)
Bachelor's Degree	22,924 (39%)	80 (40%)	77 (48%)
All Degrees	31,505 (54%)	99 (49%)	91 (57%)



Success in the New Economy

<https://www.youtube.com/watch?v=bauDp4NdPK8>

See it to Be it



=



Be versus Do

Be versus Do

Don't ask, "What do you want to be"

Ask, "What do you want to DO?"

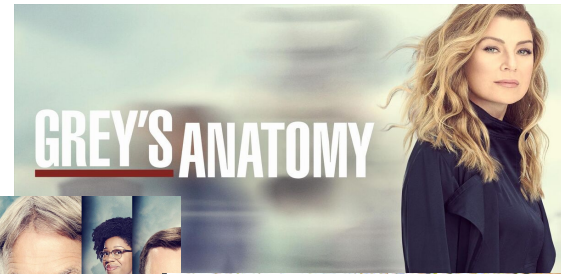
Disassociation between a student's understanding of what a profession actually does.

Be versus Do

Don't ask, "What do you want to be"

Ask, "What do you want to DO?"

There is a disassociation between a student's understanding of what a profession actually does.



Let's unpack

What do you want to do?

Let's unpack

What do you want to do?

Environmental Science

- Science Field
- Engineering Field
- Manufacturing Field
- Political Field
- Business Field

Let's unpack again

What do you want to do?

Welder

Let's unpack again

What do you want to do?

Welder

Sometimes, this is the extent of the vocabulary that a student has to describe the intrinsic value they want out of their work.

Let's unpack again

What do you want to do?

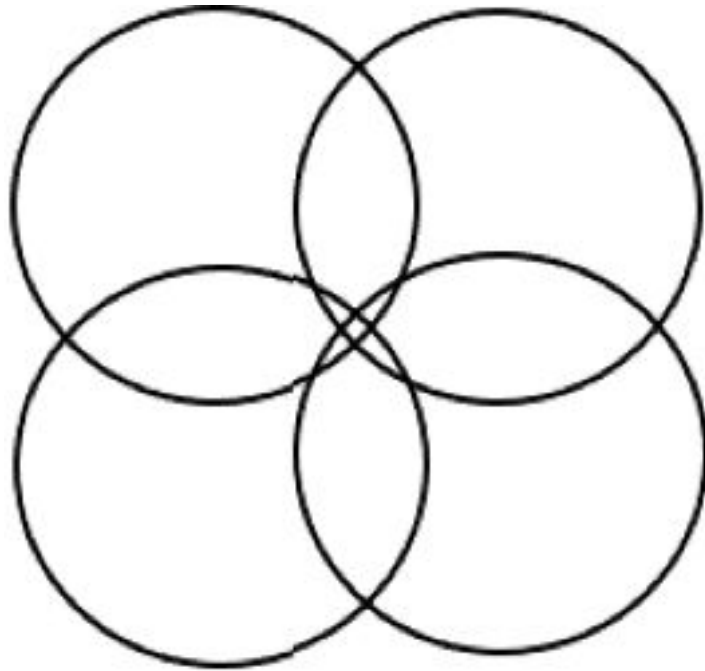
Welder

Sometimes, this is the extent of the vocabulary that a student has to describe the intrinsic value they want out of their work.

You like to make things

- Carpenter
- Millwright
- Mason

Career Guidance Circles Activity







Green Mountain High School

https://greenmountainhs.jeffcopublicschools.org/academy_program

2019 Conference

*Strengthening America's Future
Through Career Pathways*



October 11–13, 2019
(Friday–Sunday)



Renaissance Orlando
at Seaworld

Winger Flight Paths

4 - Career Focused classes

3 - Passion Courses

2 - Related Courses or Activities

1 - Professional Interview

Manufacturing, Engineering, and Technology

4	Foundation Career Focused Courses: <ul style="list-style-type: none">● Geometry● Pre-Calc● Intro to Engineering● Computer Science and Programming	Carpentry Flight Path <ul style="list-style-type: none">● One Foundation Course● Intro to Woods● Machine Woods 1 & 2 or <ul style="list-style-type: none">● Cabinets 1 & 2	Metals Flight Path <ul style="list-style-type: none">● Intro to Metals● Hot Metals● Metal Tech 1& 2 or <ul style="list-style-type: none">● Metal Fabrication 1 & 2	Engineering Flight Path <ul style="list-style-type: none">● Intro to Engineering● Principles of Engineering● Civil Engineering● AP Physics	Engines Flight Path <ul style="list-style-type: none">● Computer Science and Programming● Small Gas Engines● Auto Service● Advance Power
3	Passion Courses				
2	Related Courses <ul style="list-style-type: none">● Two courses from any another MET Flight Path● Any of the following courses:<ul style="list-style-type: none">○ Digital Electronics○ Construction Tech○ Industrial Enterprise Practicum○ Pre Calc○ Calculs○ AP Physics○ Landscape Design● Apply for a related PSEO Course		Related Activities: <ul style="list-style-type: none">● One Semester in Skills USA Club● One Semester in Robotics● Work on set construction for one of the plays or musicals● Apply for another outside club or activity● Apply for 40 hours of volunteer work in a related area● Apply for one Semester of work in a related area		
1	Professional Career Focused Interview				

Career Clusters and Pathways Included:

- **Agriculture, Food DNR:** Power, Structural and Technical Systems
- **Architecture and Construction:** Design and Pre-Construction; Construction; Maintenance and Operations
- **Information Technology:** Programming and Software Development
- **Manufacturing:** Production; Manufacturing Production Process Development; Maintenance, Installation, and Repair; Quality Assurance; Logistics and Inventory Control; Health, Safety, and Environmental Assurance





WINGER *Flight Paths*

**An E-12 Initiative Focused on
All Students Making a More Informed
Choice after Graduation**