

Lessons Learned

How breaking down silos has led to innovative programming

Dr. Camille Reese
Vice President, Instruction & Chief Academic Officer

Carol Johnson
Vice President, Workforce Development & Continuing Education

Amanda Rhea
Director, Educational Partnerships



Mitchell Community College



- Iredell County, North Carolina
- Population 175,711
- Chartered 1852
- 57th member of NCCCS in 1973
- 2nd location in 1983
- 3rd location in 2017

A House Divided

Credit/Curriculum

- 100+ degree, diploma, certificate options, transfer & CTE
- 1 semester-2 years
- Dual enrollment for high school students (42% curriculum population)
- 2017-2018 Enrollment: 4,264 (unduplicated)
- Comprehensive program planning

Non-Credit/Continuing Education

- Train for work, personal enrichment, high school equivalency, small business center
- 2 hours-2 years
- Options for high school students in exploration stages
- 2017-2018 Enrollment: 4,905 (unduplicated)
- Ability to respond quickly

NCCCS Set Up

- Common course library in credit and non-credit
 - Curriculum courses the same at all 58 community colleges, guaranteed transfer to senior institutions in NC
 - Continuing education courses the same at all 58 community colleges with the ability to customize based on need
- Previous funding model encouraged working in silos
- Focus on stackable credentials
- Fast track for specific industry areas



Standing as One

Automation

Electrical: Residential Wiring

Electrical: Circuit Analysis 1

Electrical: Commercial Wiring

Electrical: Industrial Wiring

Emergency Medical Science

Esthetician 1 & 2

HVAC: Duct Systems

HVAC: Servicing

HVAC: Comfort Cooling

HVAC: Heat Pump Technology

HVAC: Heating Technology

HVAC: Intro to Refrigeration

HVAC: Refrigerant Certification

HVAC: Residential System Design

HVAC: Customer Relations

HVAC: Electricity

Manicurist/Nail Technician

Motors and Controls

Programmable Logic Controllers



Partnership is Essential



Options for High School

Accounting Foundations

Agriculture Business
Foundations

Agriculture Science
Foundations

AC, Heating, & Refrigeration

Business Administration
Foundations

Computer Integrated
Machining

Computer Science

Criminal Justice Technology

Culinary Arts

Digital Media Essentials

Digital Media Technology

Early Childhood Education

Electrical Systems

Emergency Medical Science

Fire Protection

IT Exploration

Manicuring

Medical Assisting

Nurse Aide

Office Management

Personal Finance

Welding



Meeting the Need

- What is in the best interest of the student
- Cross enroll all types of students into courses
- Industry-recognized certifications
- Multiple entry and exit points
- Fiscally responsible for the College

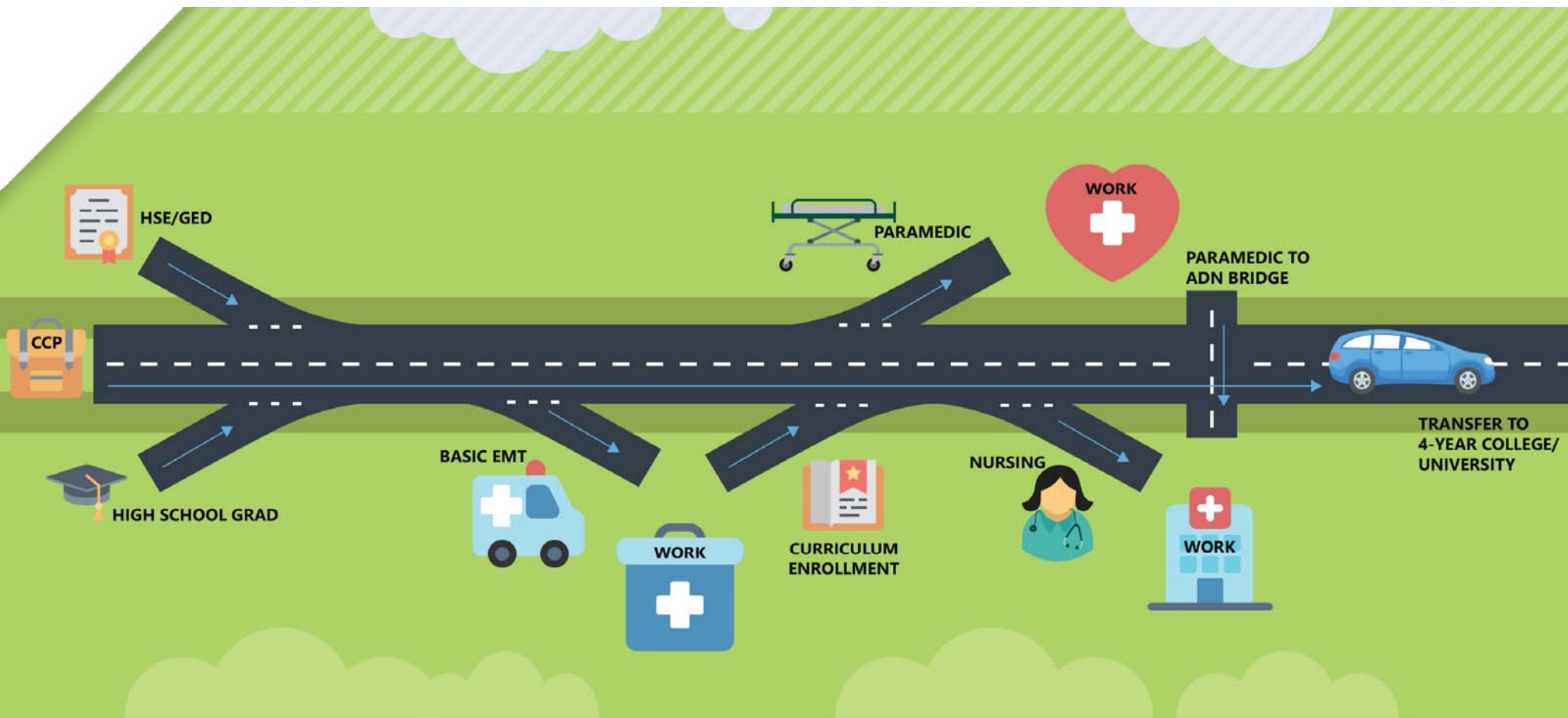


A Case Study: EMS



Awarded credit for non-credit course completion through EMS Bridge option. Seven paramedic students earned the AAS Emergency Medical Science within a year of program implementation.

EMS to RN program beginning spring 2020 allows the graduates of the AAS EMS degree to transition into RN program, including students who completed the EMS bridge option.



It Hasn't Been Easy

- Have long history of working in silos
- Hard conversations have to happen
- Relationships are KEY
- Buy-in
- Formalizing for documentation

We aren't finished yet!



Contact Information

Dr. Camille Reese, VP for Instruction

creese@mitchellcc.edu | (704) 878-3264

Carol Johnson, VP for Workforce Development & Continuing Education

cjohnson@mitchellcc.edu | (704) 878-3225

Amanda Rhea, Director of Educational Partnerships

arhea@mitchellcc.edu | (704) 978-5441



Mitchell
COMMUNITY COLLEGE