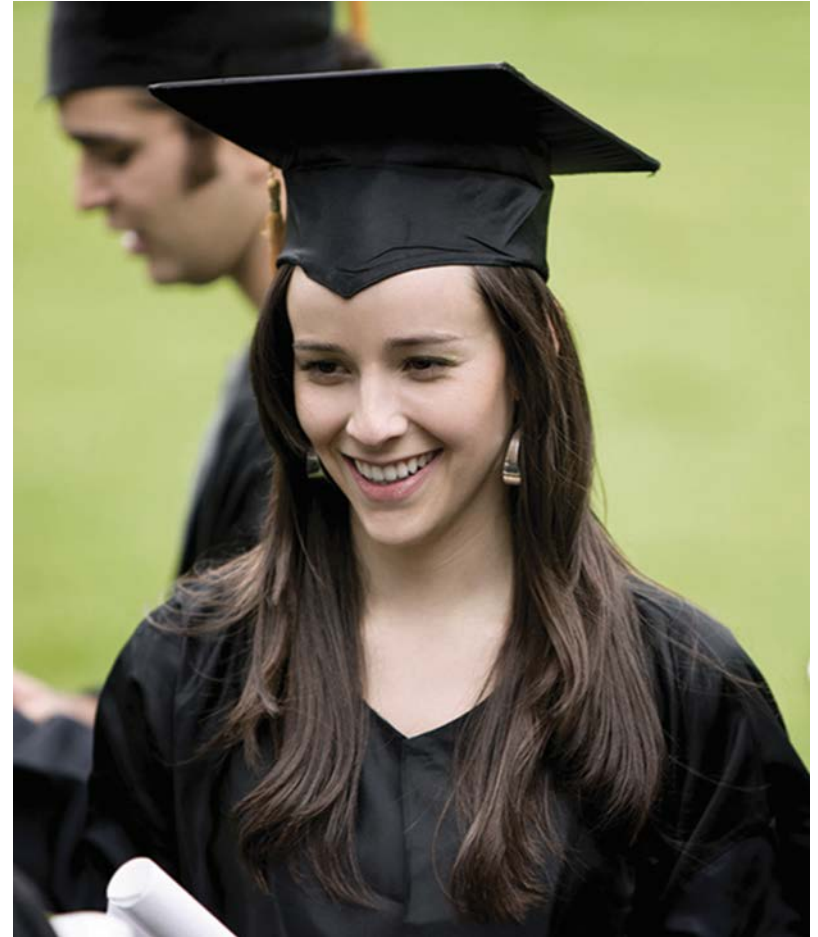


We prepare Idaho's youth and adults for high-skill, in-demand careers.

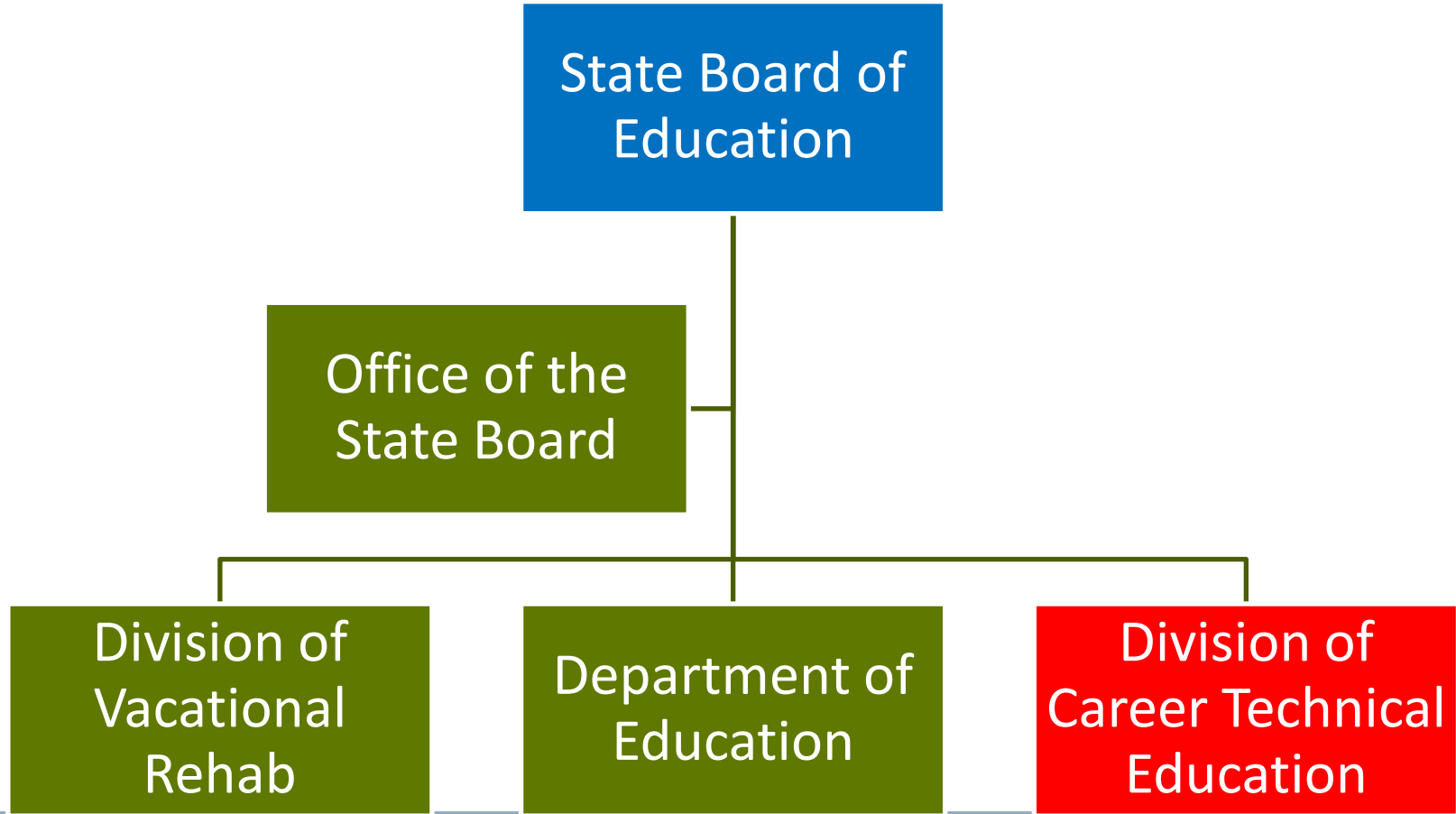


IDAHO CTE Program Alignment Initiative

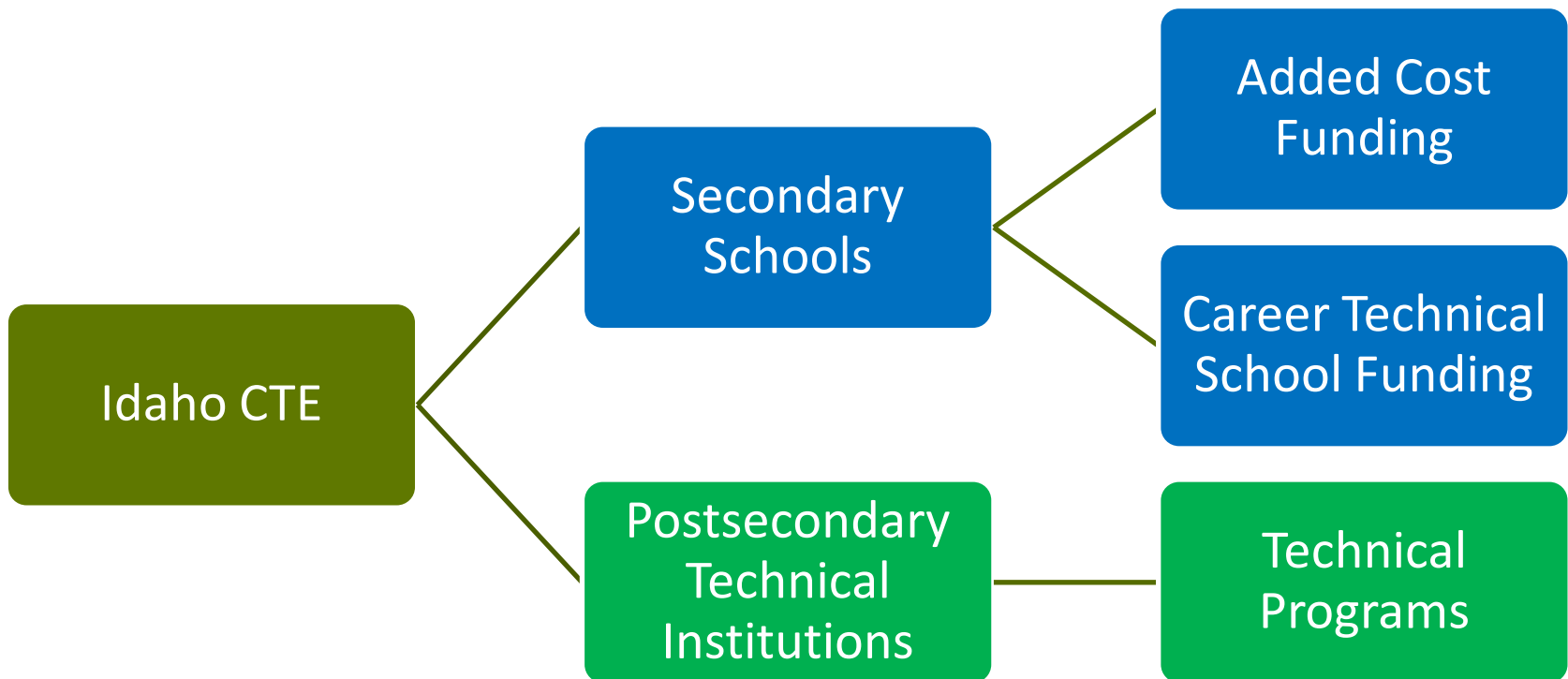


Susan Johnson, Steve Rayborn
2016 NCPN Conference, Indianapolis

- Idaho State Education Structure



- Idaho CTE Funding Structure



CTE in Idaho

- 97% of CTE students graduate high school
- 64% of CTE high school students go on to college compared to 54% of all Idaho students
- 93% of technical college completers found jobs or continued their education
- 17 out of 20 of the most in-demand jobs are associated with CTE pathways



Why Change?

- Complete College Idaho
 - 60% of Idahoans will have a degree or certificate by 2020
 - Currently 40% of Idaho citizens have a postsecondary credential
 - State cannot meet this goal without more students graduating from postsecondary CTE programs
 - High School CTE Concentrators do not enroll in postsecondary CTE programs
- Perkins IV
 - TSAs did not align to high school programs
 - True programs of study did not exist
 - Tech Prep

Program Alignment Initiative

- Increase transition of secondary concentrators
- Create consistent avenue of access to programs for secondary concentrator graduates
- Substantiate Technical Competency Credit (TCC) opportunities
- Develop the basis for consistent Vertical Alignment with secondary pathways
- Ensure ongoing collaboration between secondary/postsecondary programs

Phase 1

Secondary Standards Alignment; TSA Development

Phase 2

Postsecondary Horizontal Alignment of First Semester Courses

Phase 3

Align CTE secondary programs to postsecondary program for TCC credits in first semester courses

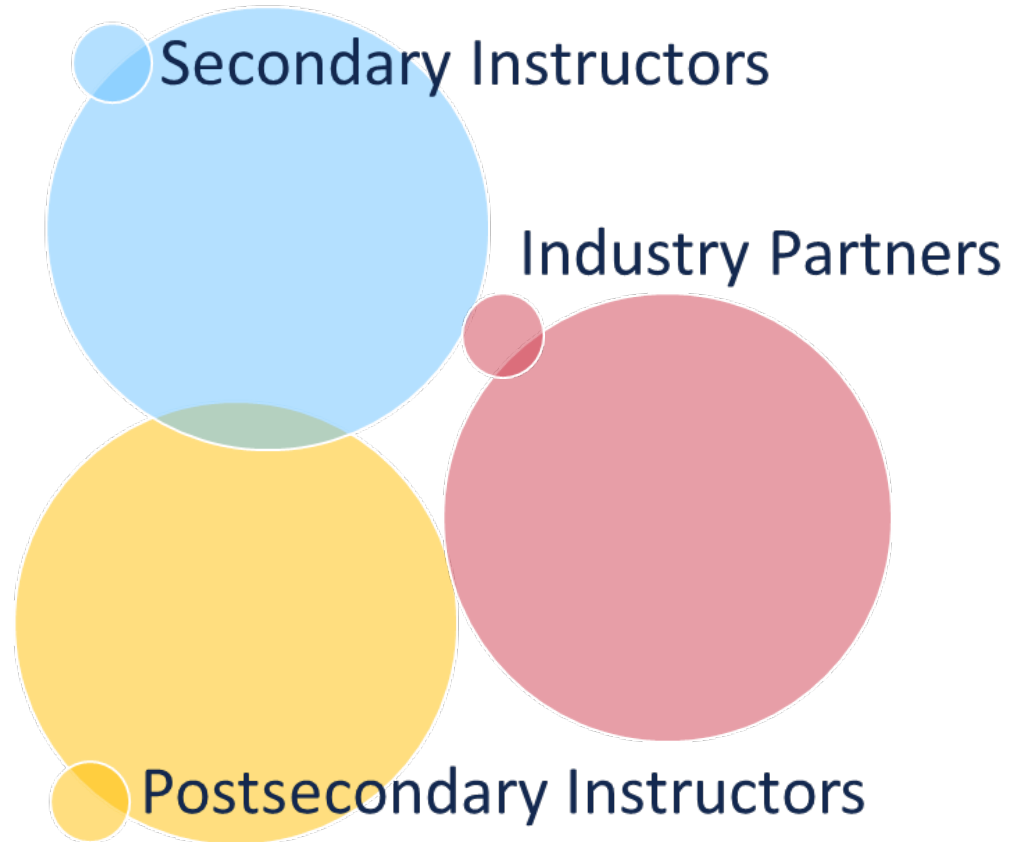
Phase 4

Annual Professional Development delivered by PS Instructors at PTE Summer Conference (beginning 2016)

Phase 1

Standards Alignment Team for each program pathway. Meet early fall:

- Program Standards
- Student Learning Outcomes
- Criticality Survey
- Technical Skills Assessment



We prepare Idaho's youth and adults for high-skill, in-demand careers.



IDAHO PROFESSIONAL-TECHNICAL EDUCATION Administrative Services Program Standards Criticality Survey

1. Demonstrate Proficiency in Word Processing

Answer Options	Nice to Know	Need to Know	Critical to Know	Rating Average	Response Count
Use a template to create a business document	22	57	39	2.14	118
Create tables, charts, and graphs to depict information	27	54	37	2.08	118
Demonstrate appropriate formatting and design to	11	40	67	2.47	118
Demonstrate competency in keyboarding and 10-key	20	40	58	2.32	118
Draft, edit, and revise written work	9	40	68	2.50	117
Create various desktop publications (e.g., newsletters,	54	50	13	1.65	117
Use data to create mail merging with other software	49	55	14	1.70	118
<i>answered question</i>					118
<i>skipped question</i>					0

2. Demonstrate Proficiency in Spreadsheet Applications

Answer Options	Nice to Know	Need to Know	Critical to Know	Rating Average	Response Count
Generate formulas and use functions to solve a	41	52	25	1.86	118
Use formatting and editing to create a spreadsheet	19	55	44	2.21	118
Create tables, charts, and graphs to depict information	24	63	30	2.05	117
Demonstrate sorting and filtering data	26	59	32	2.05	117
Export data to other software applications	46	55	14	1.72	115
Import data to create spreadsheets	38	64	15	1.80	117
Implement security measures for spreadsheet	44	53	20	1.79	117
<i>answered question</i>					118
<i>skipped question</i>					0

We prepare Idaho's youth and adults for high-skill, in-demand careers.



Phase 2

- Programs identified
- Instructors collaborate
- First Semester courses chosen & aligned
- Testing Expectations
- Credit requirements
- Micro-certifications



We prepare Idaho's youth and adults for high-skill, in-demand careers.



Typical Starting Point

#1	WELD107-Applied Leadership & Safety	1	
	WELD132-Thermal Cutting Processes	2	
	WELD 149-Basic Blue Printing	2	
	WELD154- SMAW Arc Weld 1	2	
	WELD156-GMAW&FCAW Mig Weld 1	2	
	WELD158- GTAW Tig Welding 1	2	Total 11
#2	WLDTTC270-Directed Welding Projects	4	
	WLDTTC150-Welding Power Sources	2	
	WLDTTC261-Benchwork for Welders	2	
	WLDTTC155-Basic Welding Processes Lab	7	Total 15
#3	WELD0131-Welding Practice 1	12	
	WELD1040-Welding Theory	2	
	WELD0143-Shop Math 1	2	Total 16
#4	WELD100A-Welding Theory	2	
	WELD111-Safety Applications	1	
	WELD120-Blueprint Reading	3	
	WELD197L-Oxy/Fuel Cutting Lab	1	
	WELD181L-Welding Lab 1	5	Total 12
#5	MAT104-Welding Math	3	
	MTD101-Industrial Safety and Report Wrtg	3	
	WELD117-Welding Theory & Metallurgy	4	
	WLD118-Arc Welding	4	Total 14

We prepare Idaho's youth and adults for high-skill, in-demand careers.

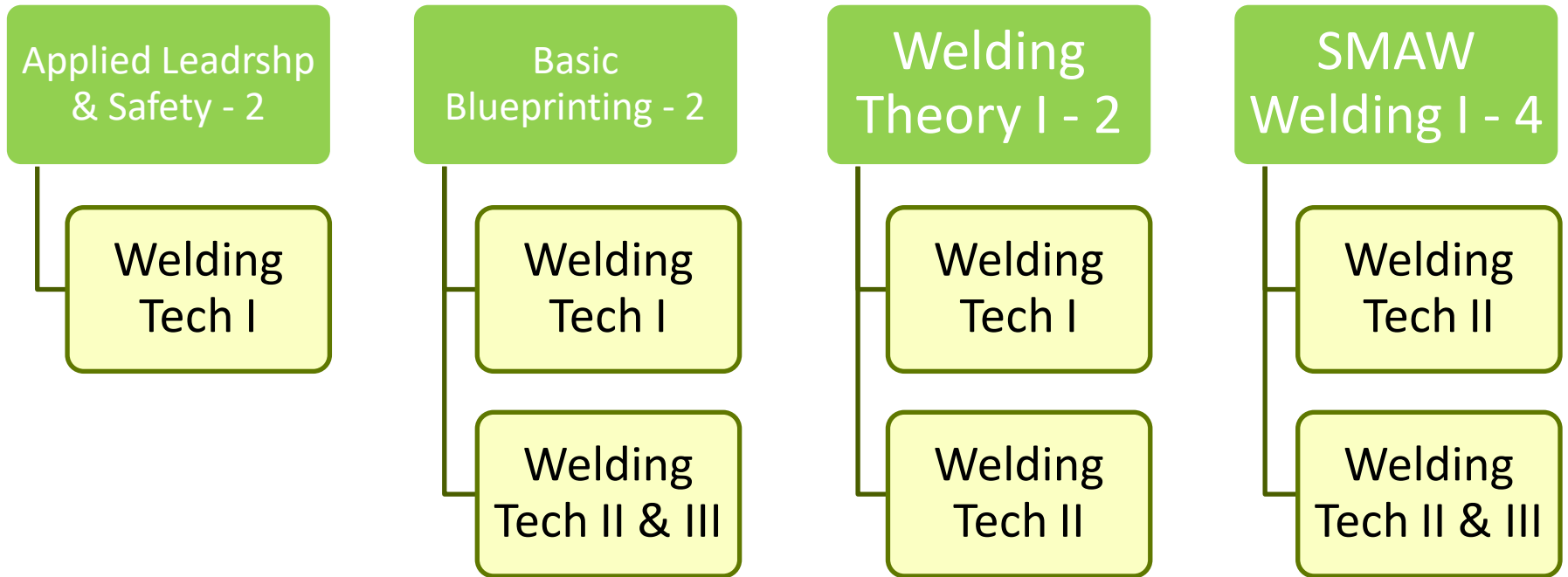


Completed Alignment Example

WELDXXX-Applied Leadership & Safety	2
PS 1.1 Demonstrate General Lab Safety Rules	
PS 1.2 Identify & Utilize Proper Tools	
PS 1.3 Identify & Utilize Proper Power Equipment	
PS 1.4 Demonstrate Workplace Readiness Skills	
WELD XXX-Basic Blue Printing	2
PS 2.1 Demonstrate Proper Print Reading & Identification	
PS 2.2 Demonstrate Measuring & Scaling Techniques	
PS 2.3 Utilize Layout Principles & Practices	
WELDXXX- Welding Theory 1	2
PS 3.1 Identify Material Properties & Science	
PS 3.2 Identify Filler Metals	
PS 4.1 Safety Procedures	
WELDXXX- SMAW Weld 1	4
PS 4.1 SMAW Safety Procedures	
PS 4.2 Produce Welds using SMAW on Carbon Steel	
	Total 10

Phase 3

Postsecondary Welding 1st Semester



Secondary PTS Welding Technology

Secondary Teachers (CTS):

- Consistent CTE Endorsement
- Industry Endorsement**
- Program Delivery – Minimum= All Aligned Credits**
- Student Testing – CTECS Technical Skills Assessment
- Summer Conference Professional Development

Secondary Comprehensive Teachers (CTE):

- Consistent PTE Endorsement
- Program Delivery – Minimum=Technical Competency Credit 1 Aligned Course**
- Student Testing – CTECS Technical Skills Assessment
- Summer Conference Professional Development

Phase 4

- Develop/Deliver annual Professional Development for secondary instructors based on student TSA Performance at Summer “Reach” Conference
- Timetable for Recommendations, based on completed secondary TSA’s

Summer 2015 Schedule:

- **Jun 1-3:**

Welding **4 – 10 Credits**

Programming **3 – 12 Credits**

- **Jun 8-10:**

Collision Repair **6 – 10 Credits**

Auto Technology **3 – 8 Credits**

- **June 15-17:**

Computer Support **2 – 8 Credits**

Diesel Technology **2 – 6 Credits**

- **Jun 22-24:**

Admin Services **3 – 9 Credits**

Early Child **2 – 6 Credits**

- **Jun 29 – Jul 1:**

Web Des/Dev **2 – 6 Credits**

Precision Machining **4 – 12 Credits**

Summer 2016 Schedule:

- **Jun 6-8:**

Drafting Technology **1 – 4 Credits**

Graphic Design **2 – 6 Credits**

Marketing **1 – 3 Credits**

Culinary **2 – 9 Credits**

- **Jun 13-15:**

Pre-Engineering **1 – 2 Credits**

Hospitality Mgmt **2 – 6 Credits**

Residential Construction **2 – 6 Credits**

- **Jun 20-22:**

Ag Business Econ

Ag Animal Science **3 – 9 Credits**

Ag Orn Horticulture

- **Jun 27 – Jun 29:**

Networking Support **1 – 4 Credits**

Electronics **2 – 6 Credits**

Applied Accounting **1 – 3 Credits**

We prepare Idaho's youth and adults for high-skill, in-demand careers.



QUESTIONS?

Susan Johnson

Phone: (208) 429-5543

Fax: (208) 334-2365

www.cte.idaho.gov

susan.johnson@cte.idaho.gov

Steve Rayborn

Phone: (208) 429-5503

Fax: (208) 334-2365

www.cte.idaho.gov

steve.rayborn@cte.idaho.gov